



**INTRUSION WITH VISION**

# AX-SERIES WIRELESS ALARM HUB

868MHz



## STYLISH DESIGN WITH COMPREHENSIVE CONNECTIVITY

The AXHub is the latest innovation in intruder alarm systems. Part of the Hikvision AX Series and catering for residential and small commercial applications, the AXHub connects security peripherals such as motion detectors and displacement sensors, alongside safety devices like smoke and gas sensors to keep people safe.

Simple to install and use, the AXHub provides voice prompts locally to assist during installation, as well as alert the end user to any events. The AXHub is also compatible with the Hik-Connect smart device app, in addition to a wide range of communication pathways and multiport IP communications via either the Cloud or CMS for added peace of mind.

This Cloud connectivity allows full control of the system from anywhere via Hik-Connect, to easily and remotely arm, disarm and monitor the system. The Cloud also enables the use of revolutionary IVaaS (Intruder Verification as a Service), which allows end users and monitoring stations to quickly and efficiently confirm system events through HD video verification.



### WEB CONFIGURATION

The AXHub has a built-in web server which enables the device to be configured through a web browser over the local IP network. This offers more flexibility and time saving on site, as setup can be done quickly and efficiently using a laptop or compatible smart device.



### EASY SETUP AND INSTALLATION

Setting up the system could not be simpler, with an intuitive and easy to use interface. Connect to the panel directly via our web-browser or with iVMS-4200 on a laptop for on-site setup or, alternatively, program the system using the Hik-Connect app. Learning devices and sensors onto the system is also easy using the one-push-to-learn feature on all Hikvision wireless intrusion devices, to save time and money.



### MULTIPLE COMMUNICATION PATHS

The variety of communication pathways available with the AXHub is unmatched. It offers LAN, Wi-Fi, GPRS and 3G/4G connections with on-board communication modules and connectors for a simpler and more cost-effective installation. With multiport IP communications, the AXHub can also communicate simultaneously with multiple devices, to ensure alarm messages are sent to all that need them. The AXHub can also notify up to 6 phone numbers in the event of an alarm through voice calls, offering greater flexibility in the way that end users are notified about events on the system.



### ARC LINKAGE

If ARC connectivity is required, the AXHub can communicate alarms and other messages in Contact ID format for a rapid and efficient response.



### TWO-WAY WIRELESS DEVICES

With the AXHub, you can add up to 32 two-way wireless devices. This provides a system which is secure and flexible; allowing even larger premises to be secured with a wide range of indoor and outdoor Hikvision peripherals.



### HIK-CONNECT

The end user app, Hik-Connect, brings together intrusion and video like never before. Linking detectors and sensors to cameras for video verification, as well as providing the end user with the ability to monitor the system from anywhere in the world; remotely checking system status, receiving alerts, arming, disarming, HD video monitoring and more, to remain informed and in complete control at all times.



# IVAAS(INTRUDER VERIFICATION AS A SERVICE)



This revolutionary service provides video verification (from any Hikvision or ONVIF IP camera in the premises) for users to quickly and efficiently confirm an alarm event on the system.

During the configuration of the panel, 2 cameras can be linked to the AXHub, which incorporates a **rolling video buffer**. Where other video verification methods rely on sending low-quality static images to confirm events, IVaaS utilises Cloud technology alongside the buffer to **link previously separate video and intruder systems to one platform**. This provides a 7 second clip in the event of an alarm; **5 seconds pre-alarm and 2 seconds post-alarm**.

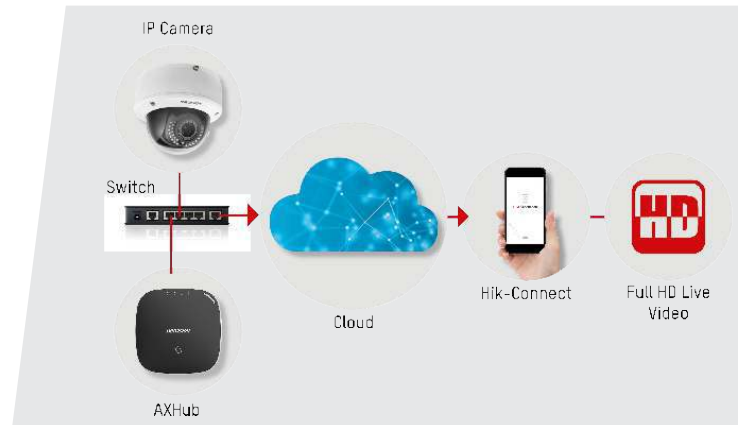
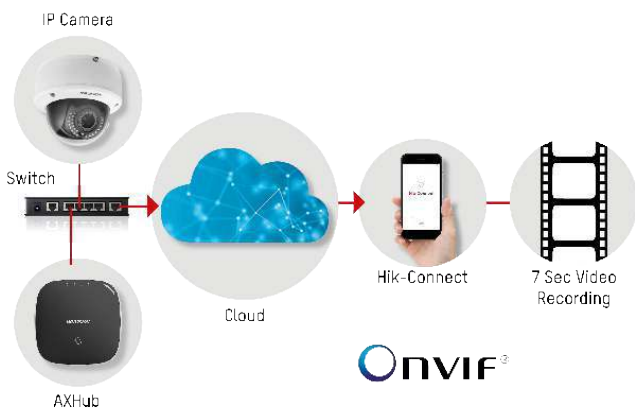
As a result, Hikvision cameras and the AXHub alarm systems work seamlessly together to provide a recorded video clip or live HD video footage, directly through Hik-Connect, iVMS or instantly to monitoring stations. This allows active decisions to be made faster and more reliably in the event of an activation.

IVaaS also provides alarm and push notifications, remote arming and disarming, and viewing live and recorded camera feeds.

## IVaaS options:

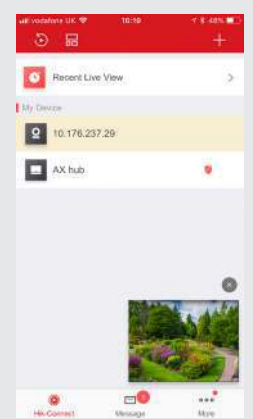
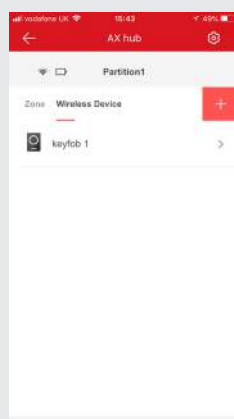
**Option 1: Recorded Push Message with Rolling Video Buffer**  
Connect up to 2 IP cameras directly to the AXHub

**Option 2: Live Video**  
Live HD Video via Hik-Connect



\*Hikvision and ONVIF cameras can be linked directly with the AXHub.

## HIK-CONNECT



### Quickly view events and video recordings

To take quick action on events, view alarms, faults and video recordings in one place. If using video verification, the video clip will be sent direct to your device, further reducing decision time when it matters most.

### See wireless devices in each partition

Check the status of wireless devices in each partition quickly and simply whilst being able to make changes to settings, bypass zones and more from inside the app.

### Easily configure the system from the app

Set up system options and make changes to programming within Hik-Connect, making configuration simple and easy to follow.

### Simple arming and disarming with user friendly interface

The simple interface of the Hik-Connect app allows easy arming and disarming of the system. Simply select stay, away, or disarm and get an instant visual indication of the system status.

### View cameras and alarms in one app

Simplifying the experience for the end user, you can view and manage both your camera and alarm systems from one app in one screen.

# TOTAL SOLUTION

# RESIDENTIAL



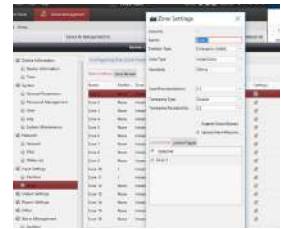
# SMALL COMMERCIAL



# SYSTEM TOPOLOGY



Cloud



iVMS

Hik-Connect



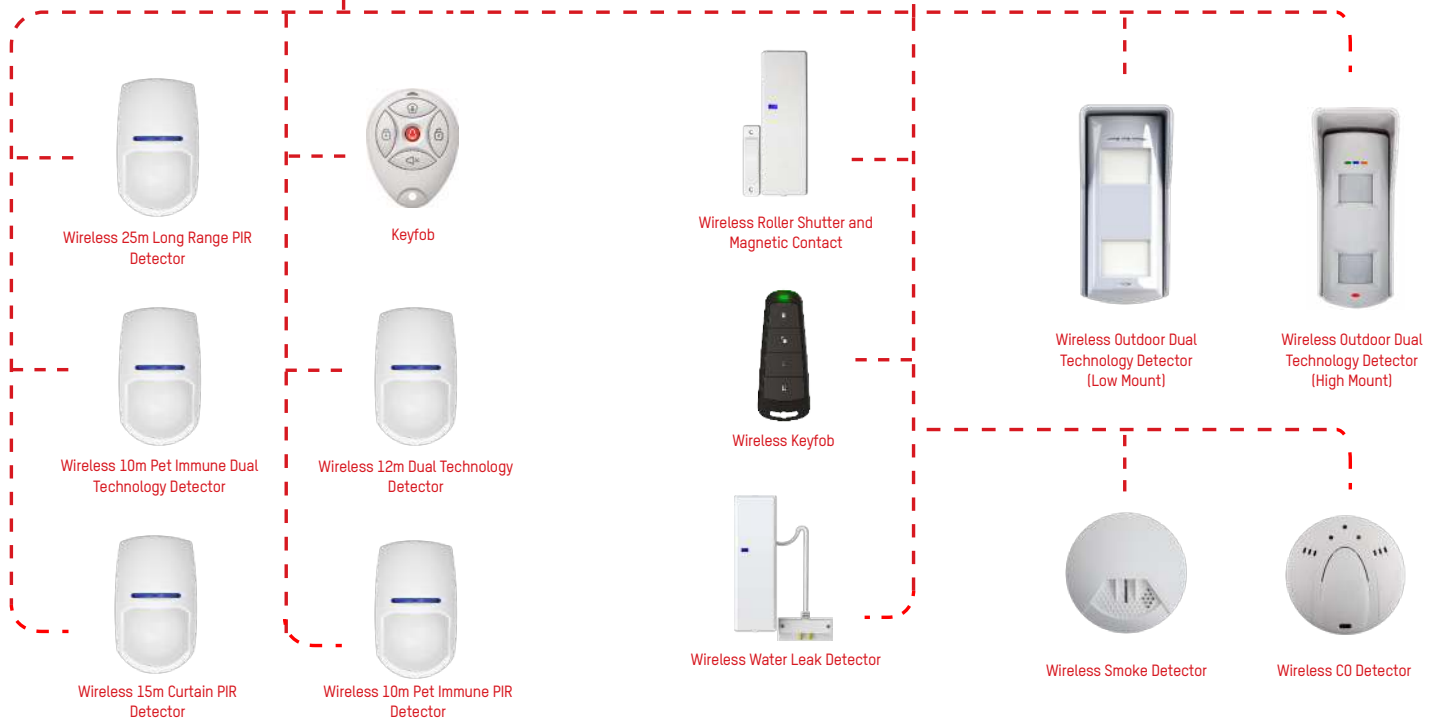
AXHub



Wireless Magnetic Contact



Wireless Shock Detector



# ACCESSORIES



**DS-19K00-Y**  
Keyfob



**DS-PD2-P10P-W**  
Wireless 10m Pet Immune PIR Detector



**DS-PD2-P15C-W**  
Wireless 15m Curtain PIR Detector



**DS-PD2-P25-W**  
Wireless 25m Long Range PIR Detector



**DS-PD2-D10P-W**  
Wireless 10m Pet Immune Dual PIR Detector



**DS-PD2-D12-W**  
Wireless 12m Dual Technology Detector



**DS-PD2-T12P-WEL**  
Wireless Outdoor Dual Technology Detector (Low Mount)



**DS-PD2-T10P-WEH**  
Wireless Outdoor Dual Technology Detector (High Mount)



**MC1MINI-WE**  
Wireless Magnetic Contact



**MC1/SHOCK-WE**  
Wireless Shock Detector



**RS2-WE**  
Wireless Universal Transmitter and Magnetic Contact



**KEYFOB-WE**  
Wireless Keyfob



**WL-WE**  
Wireless Water Leak Detector



**SMOKE-WE**  
Wireless Smoke Detector



**CO-WE**  
Wireless CO Detector



**DELTABELL-WE**  
Wireless External Siren



## Description

The AX series wireless security hub supports 32 wireless inputs. It can communicate alarm and other important notifications over LAN, Wi-Fi, GPRS and 3G/4G to smart device applications and client software. The panel supports voice guided setup for configuration and operation, making the installation process quick and easy. This solution is mainly for residential and small commercial applications, such as housing, apartments, small shops and offices.

## Main Features

- Supports dual path communication of alarm events and other signals over LAN, Wi-Fi, GPRS and 3G/4G utilising a main and backup channel
- Supports 32 wireless inputs, 8 keyfobs and 2 sirens
- Voice guide and setup for configuration and operation
- Wi-Fi Smart-Configuration
- Real time alarm report
- Long distance two-way communication
- AES 128-bit data encryption of the wireless protocol

## Available Models

### DS-PWA32-H

LAN+Wi-Fi

### DS-PWA32-HG

LAN+Wi-Fi+GPRS

### DS-PWA32-HS

LAN+Wi-Fi+3G/4G

### DS-PWA32-HR

LAN+Wi-Fi, Prox Reader

### DS-PWA32-HGR

LAN+Wi-Fi+GPRS, Proximity Reader

### DS-PWA32-HSR

LAN+Wi-Fi+3G/4G, Proximity Reader

## AXHUB

Specifications	
Wireless Inputs	32
Wireless Outputs	32
Users	12
Wireless Keyfob	8
Available RF Frequencies	Two-way wireless 868MHz
Wireless Siren	Max 2
User Notifications	Push Notifications, SMS, Voice
Built-in Proximity Reader	-xxR Supports up to 12 MIFARE card
Status LEDs	5: 1 Orange (Fault), 2 Green (Power, Cloud connect), 1 Red (Alarm), 1 Blue (Arming)
Tamper Protection	Front and rear tamper protection
Control via Smart device	Hik-Connect (available on both iOS and Android)
Panel Assist By	Voice prompt
On-board Rolling Video Buffer	Video Verification; 2ch (7 seconds, 5 seconds pre alarm, 2 seconds after alarm)
Multi Languages Optional	English, French, Russian, Italian, Spanish, Portuguese (upgrade via Cloud)
Interface	
Ethernet	10/100 Mbps Self-Adaptive Ethernet
GPRS	Supports Report Push-Notification to CMS, Cloud; Text notification via SMS; Audio notification via phone call (Models: -HG, -HGR)
3G/4G	Supports Report Push-Notification to CMS, Cloud; Text notification via SMS; Audio notification via phone call (Model: -HS)
SIM Card Slot	1 (Models: -HG, -HS, -HGR, -HSR)
Serial Port	1
Reset	1
Wi-Fi Protocol Standard	802.11b/g/n
Wi-Fi Security Encryption	64/128-bit WEP, WPA/WPA2, WPA-PSK/WPA2-PSK, WPS
Protocol	
Hik SDK Protocol Compatible	Supports HIK-SDK, management on iVMS-4200
Smartphone Application	Hik-Connect
ARC Communication	SIA-DC-09; Contact ID
Web Server	For configuration via web browser
Mobile App	Supports Alarm Push-Notification, Arming/Disarming, Status Checking, Report Checking, Video Linkage
ONVIF Protocol	Supports third party IPC integration
Technical Specification	
Power Supply	Included 5VDC, 10W
Power Consumption	<5.6W
Backup Battery	1 Lithium battery, 3.8V, 4520mAh
Other Details	
Operating Temperature	-10°C to 55°C
Operating Conditions	10% to 90% humidity (Non-condensing)
Dimensions (WxHxD)	155 x 155 x 35mm
Colour	White or Black
Shell Material	PC+ABS